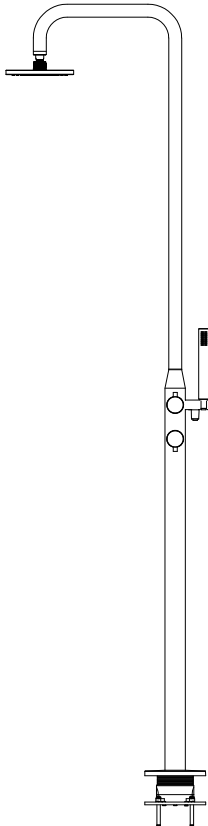


Installation Instruction

Outdoor Shower

Before Your Installation

Check to make sure you have the following parts indicated below:



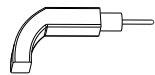
Tools You Will Need

 2X

 2X



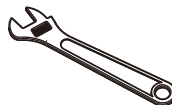
Hexagon wrench
(supplied)



Driller



Pipe tape



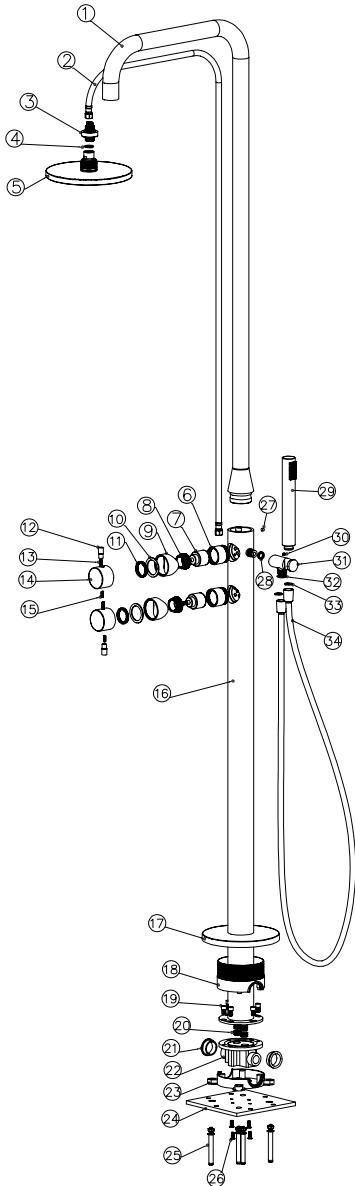
Adjustable wrench



Phillips screwdriver

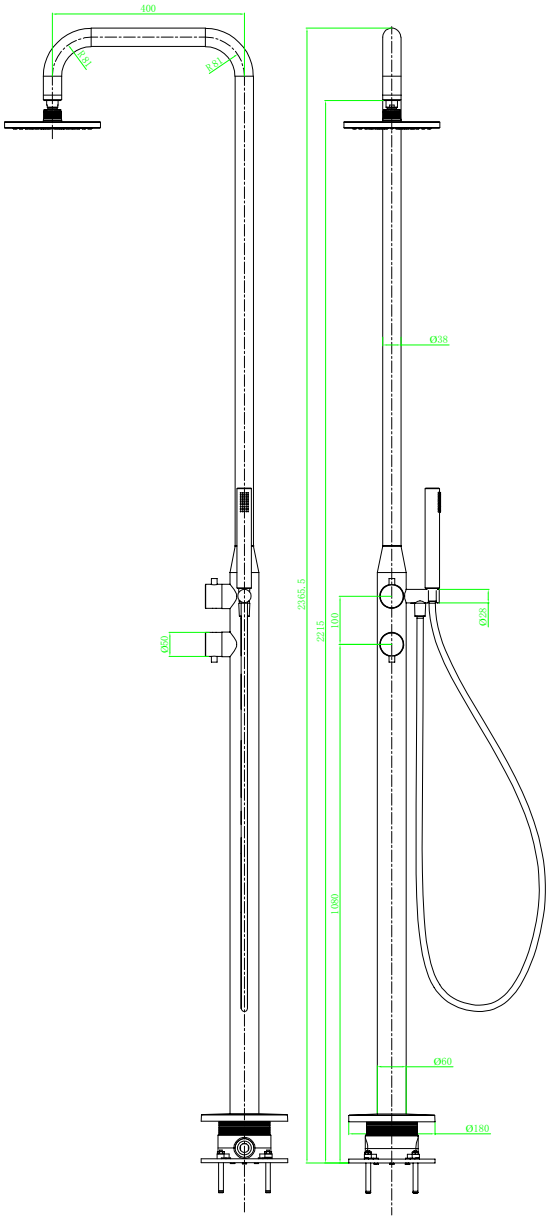
Replacement Parts

Keep this manual for ordering replacement parts.

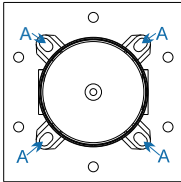


- 35 Shower hose
- 34 O-Ring
- 33 O-Ring
- 32 Connection
- 31 Check valve
- 30 Screw
- 29 Hand shower
- 28 O-Ring
- 27 Screw
- 26 Screw
- 25 Screw
- 24 Board
- 23 Box External
- 22 Box body
- 21 O-Ring
- 20 H/C inlet
- 19 Allen Screw
- 18 Box Lid
- 17 Cover
- 16 shower Main body
- 15 Allen Screw
- 14 Cap
- 13 Allen Screw
- 12 Knob
- 11 O-Ring
- 10 O-Ring
- 9 Cartridge holder
- 8 Lock nut
- 7 Cartridge
- 6 Cartridge holder
- 5 Head Shower
- 4 O-Ring
- 3 Connection
- 2 Internal shower pipe
- 1 Shower master Body

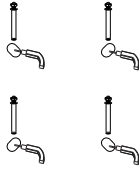
Product Dimension Drawing



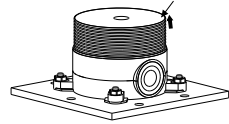
Faucet Installation Procedures



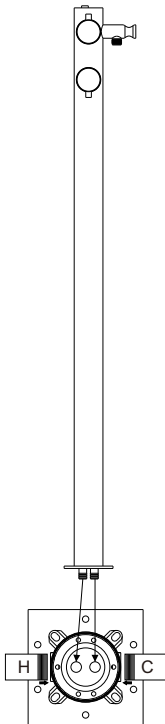
Position A locate



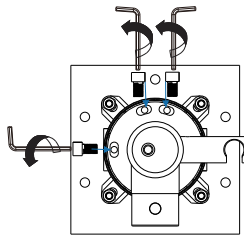
Use the electric machine to open the hole, and then install screws



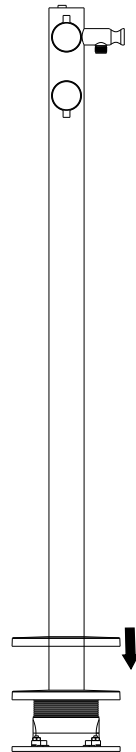
Use the tools to tighten the screws up, then Open the base box lid



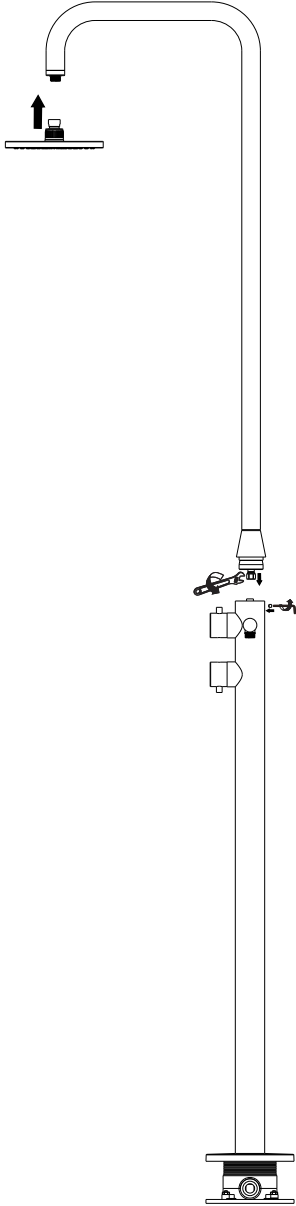
Connect the hot and cold pipes first, then Lower the main body of the shower Insert base box



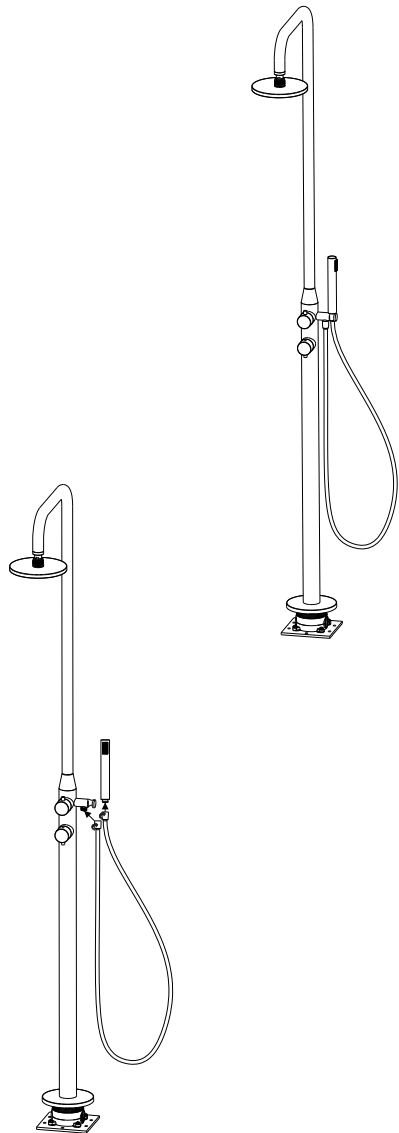
Use a Allen key to tie the screw up



Cover the base



First install the head shower On,
and then the shower master
Body connection shower Main
body, tighten the Screw



Connect the shower
Hose and hand shower