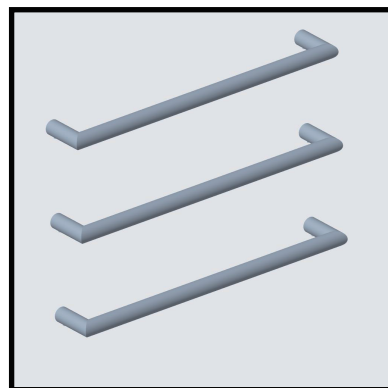
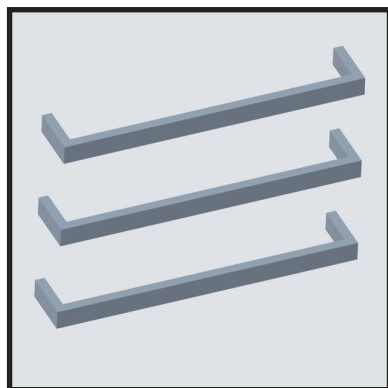


Single Bar Heated Towel Rails



(Single bar) : S01B,S01BB,R01B,R01BB

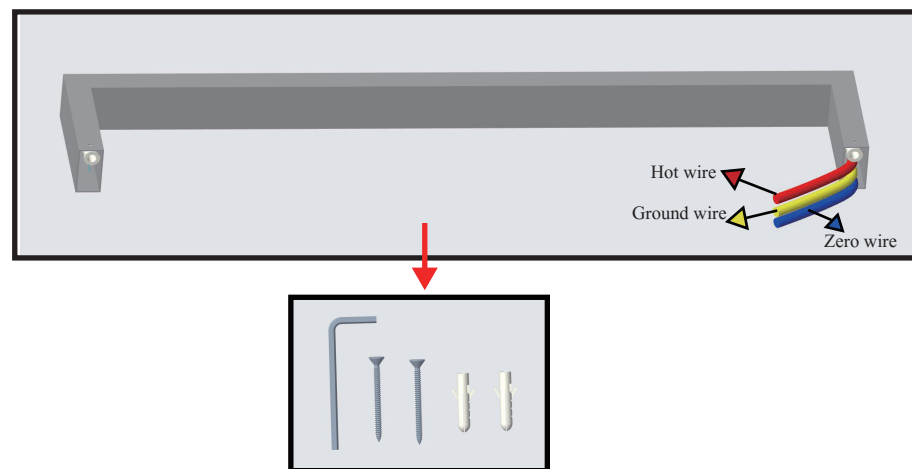
INSTALLATION

Mounting towel rail:

Please note: We advise that the towel rail should be installed by a professional.
Please read the safety information on the previous page carefully before mounting.

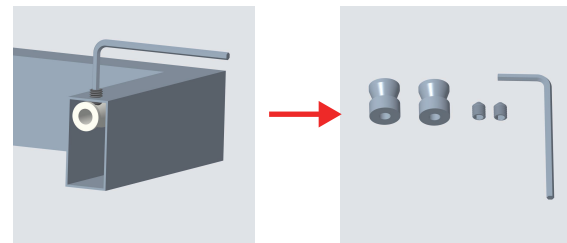
For example:

1. First, open the package, check the towel rail and the mounting accessories.



1

2. Take off the fixing base from the towel rail by the Hex key.

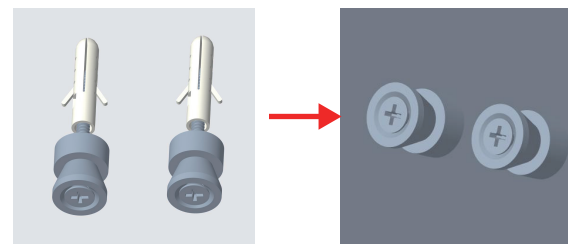


3. Confirm your concealed power wires before you install the fixing base to the wall.
4. Mark the centre distance for your model. And it is important that the line between these two points is level.

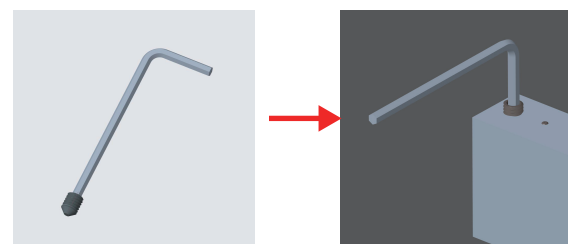


Drill a hole approximately 30mm deep where the towel rail bracket to be positioned.

5. Install these two fixing bases to the wall.

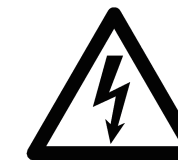


6. Connect the rail's cable to the power wires to avoid short circuit.
7. Remount the towel rail on the two fixing base.
Secure the bracket with the screw provided.



2

CAUTION: Risk of electric shock



Correct Disposal of this product



This marking indicates that this product should not be disposed with other household wastes throughout the EU. To prevent possible harm to the environment or human health from uncontrolled waste disposal, recycle it responsibly to promote the sustainable reuse of material resources. To return your used device, please use the return and collection systems or contact the retailer where the product was purchased. They can take this product for environmental safe recycling.

Konsumentkontakt
Arc E-commerce AB
Box 3124
13603 Haninge
Sverige



3