

INSTALLATION INSTRUCTION KÄHR'S LUXURY TILES CLICK

Date: 2018-12. Current installation guide can be found on www.kahrs.com

GENERAL

The room temperature when installing the floor must be between +18 °C and 25 °C, and the relative humidity in the premises must be between 25 % and 70 %. The flooring material must be acclimatised in the room for at least 24 hours before installation. The room temperature must be maintained for at least 72 hours after installation. If under-floor heating is installed, Nordic Flooring Click may be exposed to max. +27 °C.

SUBFLOOR

Kährs Luxury Tiles Click can be installed on most substrates, which must be clean, even, sufficiently dry and firm, free of yield or movement, free of cracks and flat (+/-3 mm per 2 metre and +/-1.2 mm per 25 cm).

For a concrete substrate, the max. RH is 85 % during installation, measured in accordance with the current industry standard. Any dust or loose particles must be carefully removed. Any stains or spills from paint, oil or similar must be removed. Any unevenness in concrete floors must be levelled. Levelling compound/filler must be sufficiently firm for the area of application in the premises.

INSTALLATION

Measure the area to be installed and decide on the direction of installation. The width of the tile on the last row must be no less than approx. 50 mm. If so, adjust the width of the first row. Install the floor without adhesive: allow an expansion gap of 10 mm around the whole outer border, i.e. also for pipes, stairs, pillars, door frames and thresholds. The floor must be able to move freely. Maximum free floating area is 500 sq.m. Maximum length or width of the room is 25 m.

In rooms with quadratic areas (L, F, T, U shapes), separate the areas using an expansion joint, especially by door openings. If you have any questions, please contact your dealer for further information. You can use the floor immediately after installation. The strips must be secured to the wall, never to the floor.

MISCELLANEOUS

Colour matching between individual tiles can only be guaranteed for tiles with the same production number (see production number on each pack). Always check that all packs have the same production number before installation. We recommend that the tiles be installed in the same direction, in accordance with the mark/arrow on the reverse side of the tile.

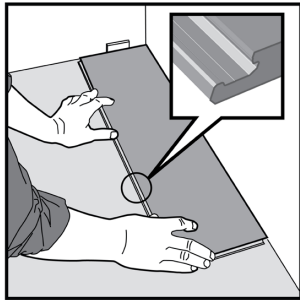
Despite the fact that all material is inspected carefully before delivery, faults can occur. Any deviations (damaged or incorrect floor tiles) must be reported immediately to Kährs and must not be installed, but must be set aside before installation. If you are in any doubt before installation, always consult us. Any returns must always be approved by Kährs, so contact us to make sure they are processed correctly.

Office chairs that are to be used on Kährs Luxury Tiles Click must be fitted with soft type W castors in accordance with DIN 68131. Also note the firmness requirement for the substrate. Rubber wheels, rubber pads, printing ink from plastic, etc. can discolour the floor and leave permanent marks. Always use pads on furniture to protect the floor against surface damage, scratches, etc.

If construction activity is to continue, place protective covering on newly-installed floors. Do not tape the protective cover directly to the floor. The adhesive on the tape can have a negative effect on the floor and some types of adhesive are very difficult to remove.

Please feel free to contact us for additional information.

INSTALLATION OF KÄHR'S LUXURY TILES CLICK

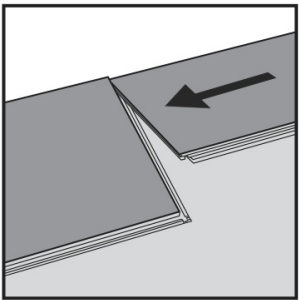


1.

First tile, first row.

Place the plank against the wall with 10 mm distance from the wall on the left.

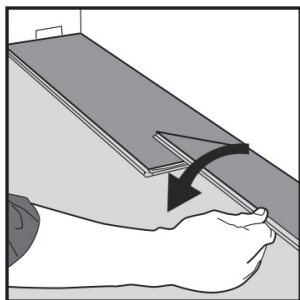
Later, after 3 rows, you can easily place the floor against the front wall as a distance of 10 mm.



2.

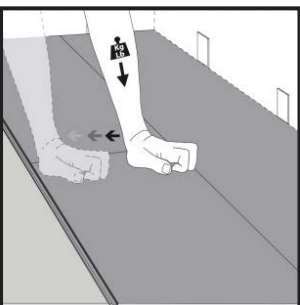
Second tile, first row.

Place the tile carefully and tightly against the short end of the first one.



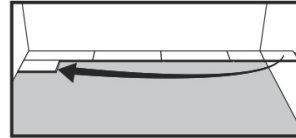
3.

Fold down in one single movement. Check that the tiles are tightly against each other. Press or tap on the newly-installed short end. At the end of the first row, leave a distance of at least 10 mm to the wall.



4.

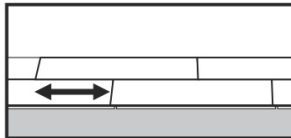
Press down with your hand or tap lightly with a rubber mallet on the tile you just installed.



5.

Second row.

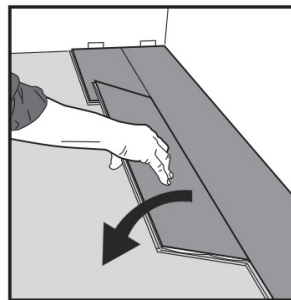
The first and last tile must be at least 300 mm. Keep a small distance from the wall.



6.

Distances between the short sides.

The minimum distance between the short ends of the tiles in parallel rows may not be any less than approx. 300 mm.



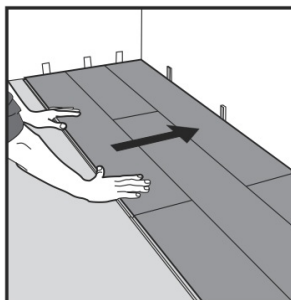
7.

Second tile, second row.

Place the tile carefully and tightly against the short end of the previous tile and fold it down in one single movement.

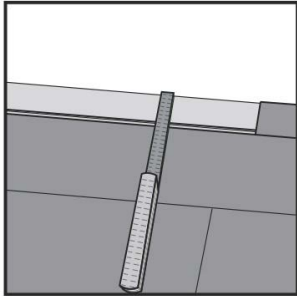
While folding down, check that the tiles are tightly against each other.

Press or tap on the newly-installed short end.



8.

After 2-3 rows. Adjust the distance to the front wall by positioning a distance of 10 mm.

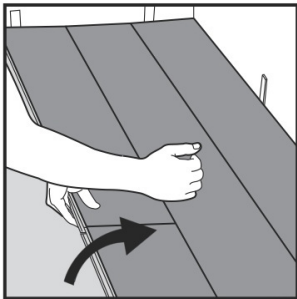


9.

Last row (and possibly the first row).

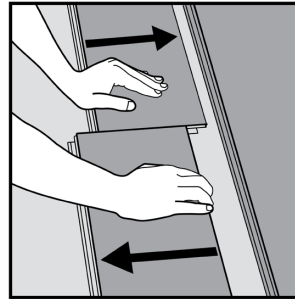
Minimum width 50 mm.
Remember the distance to the wall, 10 mm. Cut/saw the tiles lengthways and glue the short ends using PVC adhesive.

DISMANTLING FLOOR TILES



1.

Separate the whole row by carefully lifting up and releasing the whole row. Fold up and release the whole long side.

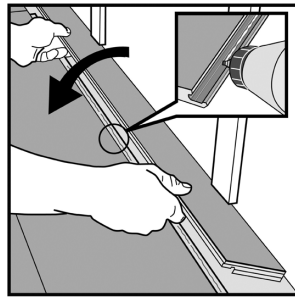
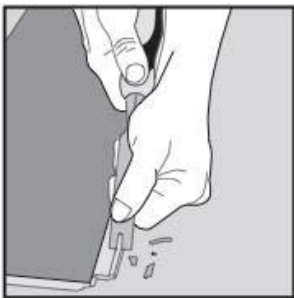


2.

Dismantle the tiles by sliding them horizontally.

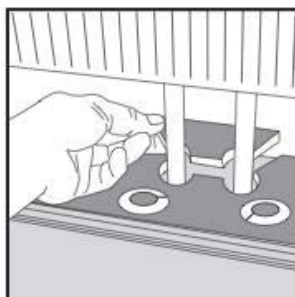
Do not fold up the floor tiles, as this will destroy the locking elements.

SPECIAL INSTALLATIONS - HORIZONTAL INSTALLATION



Cut off locking element using a chisel, apply PVC adhesive to the adjusted strip and press the tiles together horizontally. If necessary, place spacers between the final plank and the wall while the adhesive hardens.

SPECIAL INSTALLATIONS - RADIATOR PIPES



Installation around radiators. Drill holes 10 mm bigger than the diameter of the pipes. Glue together the block behind the pipes.